

USB ADSL Modem - Quick Start Guide

Follow our exclusive guide below to get your modem installed quickly and easily. This guide is based upon the Windows 98 operating system but most versions of Windows will be similar to set-up. For other operating systems, please refer to the manual on the CD included. Your PC should be turned on before following this guide.

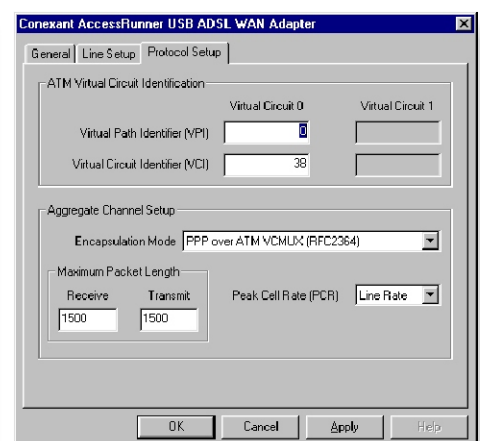
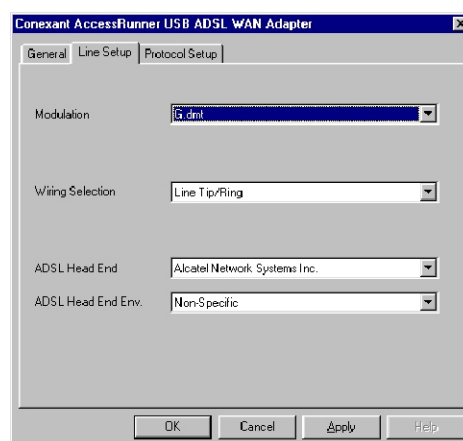
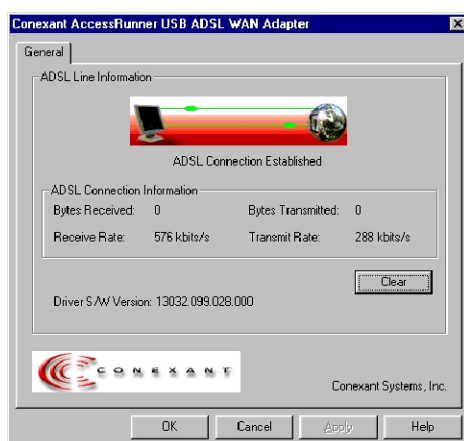
- 1 Connect the modem to your phone line. Plug your modem into your telephone line splitter (supplied). Next, plug the line splitter into your existing telephone socket.
- 2 Connecting the modem to your PC. Insert the modem's attached USB (Universal Serial Bus) connector into a spare USB port in your PC. You will need to plug the modem into your PC before installing the modem drivers.
- 3 Your PC will automatically detect that new hardware has been installed, using Windows 'Plug 'n' Play' technology. You should now insert the CD supplied with the modem. (If the wizard does not automatically open: go to Start > Settings > Control Panel > Add/Remove Hardware)
- 4 In the 'Add New Hardware Wizard', choose to Specify the location of hardware drivers. Click Browse and locate the \driver\WAN\ directory from your computer's CD drive (on most computers drive D:). Click **Next**.
- 5 Once the driver have been installed click **Finish**. From Windows Start menu, go to Settings > Control Panel. Double click on the **Conexant AccessRunnerADSL** which is now available from the Control Panel window. Note that you can also get to this from the **Access Runner Control Panel** icon on your desktop.
- 6 In the window that appears, only one tab is available ('General'). To show all options, hold the **Alt** keyboard key and press the **C** key. In the Line Setup and Protocol Setup tabs that appear, enter the following settings:

Line Setup

Modulation : G.dmt
 Wiring selection : Line Tip/Ring
 ADSL Head End : Alcatel Network Systems Inc.
 ADSL Head End Env : Non-Specific

Protocol setup

VPI : 0
 VCI : 38
 Encapsulation mode : PPP over ATM VCMUX
 Maximum Packet Length : 1500 (Receive and Transmit)
 Peak Cell Rate : Line Rate



- 7 Click OK to save these WAN settings and close the window. There will now be an icon on your Windows desktop called **Access Runner DSL** that you should double-click to connect to the Internet with ADSL. Enter your ADSL username supplied by email once your ADSL account is active (this is slightly different from your standard username chosen during signup) and your password. Click **Dial (or Connect)**. Congratulations, you are now connected to ADSL!

Turn over for your handy troubleshooting guide

This guide is provided in addition to the official documents provided by your modem manufacturer. PlusNet Technologies accepts no responsibility for any problems you may experience as a result of following this guide.

