

Your Voyager 1055 USB Wireless Adapter Guide

Your Starter Pack Contents:

- 1 x Voyager 1055 USB wireless adapter (illustrated)
- 1x Installation CD and Setup Guide.

Important

If you are installing this wireless adapter as part of an existing wireless network with a base unit (e.g. BT Voyager 2100), you should install and switch on the base unit before proceeding.



Software Installation

- 1 Insert the BT Voyager Wireless CD into your computer's CD-ROM drive. The CD will autoplay. If the screen does not appear, click **My Computer** on your desktop or in the Windows Start menu, then click the CD-ROM icon. In the list of files, click **setup**.
- 2 Click **Install BT Voyager Wireless Adapter**. The installation screen will appear (Figure 1).

Click **Next>** on the installation screen to install the software.
- 3 You are shown the Software Licence Agreement. Read it and Click **Yes** to accept it. Clicking **No** will cancel installation.
- 4 You are prompted to select a directory into which the setup files will be copied. You can select the default directory by clicking **Next>**. Automatic installation will follow, as Windows copies the setup files to your computer.

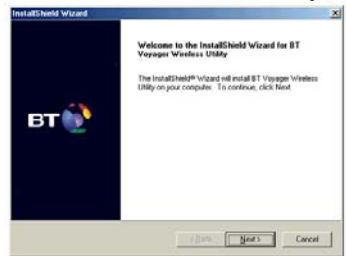


Figure 1: Installation Wizard

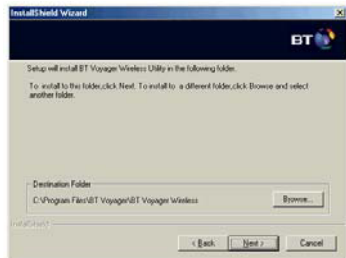


Figure 2: Copying drivers

Hardware Installation

- 5 When copying is finished, the following screen is shown (Figure3).

Plug your BT Voyager 1055 into the USB port of your laptop or desktop PC. Windows will detect the new hardware.

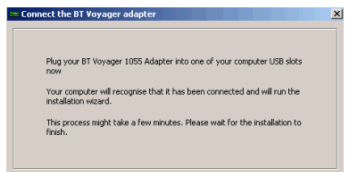



Figure 3: Software setup complete

- 6 Click **Next>** on the Windows wizard screens to install the software. When prompted, close all applications and then restart your computer. When installation is completed, the BT Voyager Wireless Utility icon  will appear in the bottom right of your screen.

Instructions continue on other side

